



Duston Road
Duston, Northampton

oriordanbond
SALES & LETTINGS



Duston Road

Duston
NN5 5AS

PRICE £285,000

Offered to the market with no onward chain is this unique and rarely available two bedroom detached house. Located in the popular area of Duston, set within close proximity to local schools, parks and all the amenities at Sixfields Leisure Park, the property would make an ideal purchase for first time buyers and downsizers.

Requiring some modernisation throughout, the accommodation comprises porch, entrance hall, large bay fronted sitting room, dining room, kitchen, bathroom with separate WC and two first floor double bedrooms. Outside is a low maintenance rear garden with patio area. To the front of the property is a gated driveway alongside a low maintenance garden. Further benefits include a larger than average single garage with electric door, gas radiator heating and uPVC double glazing throughout. (C/936/M)

Additional information

- Council Tax Band: C
- Energy Efficiency Rating: C

Viewing

Viewing strictly by appointment – details below

Disclaimer

O'Riordan Bond Estate Agents Limited has not tested apparatus, equipment, fittings or services and so cannot verify they are in working order. The buyer is advised to obtain verification from their solicitor or surveyor.

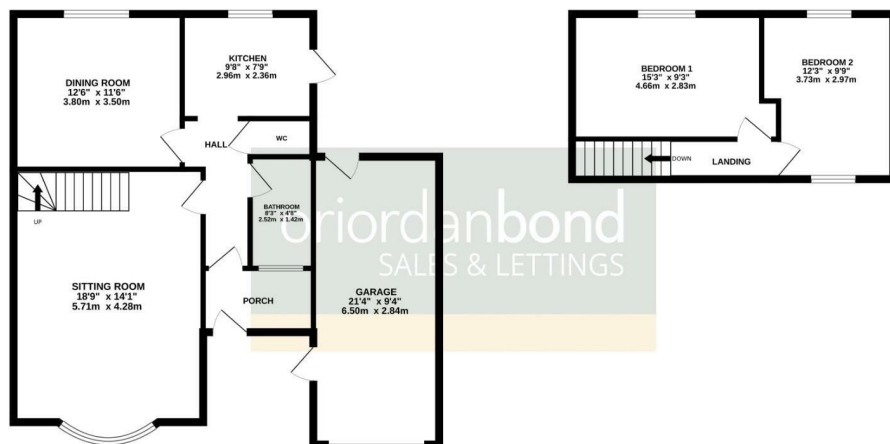
O'Riordan Bond Duston Sales
01604 589007

duston@oriordanbond.co.uk



GROUND FLOOR
821 sq.ft. (76.3 sq.m.) approx.

1ST FLOOR
291 sq.ft. (27.0 sq.m.) approx.



TOTAL FLOOR AREA: 1112 sq.ft. (103.3 sq.m.) approx.

Whilst every attempt has been made to ensure the accuracy of the floorplan contained here, measurements of doors, windows, rooms and any other items are approximate and no responsibility is taken for any error, omission or mis-statement. This plan is for illustrative purposes only and should be used as such by any prospective purchaser. The services, systems and appliances shown have not been tested and no guarantee as to their operability or efficiency can be given.

Made with Metropix 02025